



# City of Bedford

and Indiana Department of Transportation



## **Stellar Downtown Streetscape and J Street Trail Project**

*March 20, 2017—June 25, 2018*

### **Streetscape Schedule**

**Phase 1—J Street Construction (14th Street South to 17th Street)** March 20, 2017—August 23, 2017  
16th Street Construction (I Street to J Street) March 20, 2017—July 6, 2017

**Phase 2—I Street Construction (15th Street South to 16th Street)** August 23, 2017—November 8, 2017

### **Winter Break**

**Phase 3—15th Street Construction (I Street to J Street)** March 30, 2018—June 25, 2018

### **Contacts**

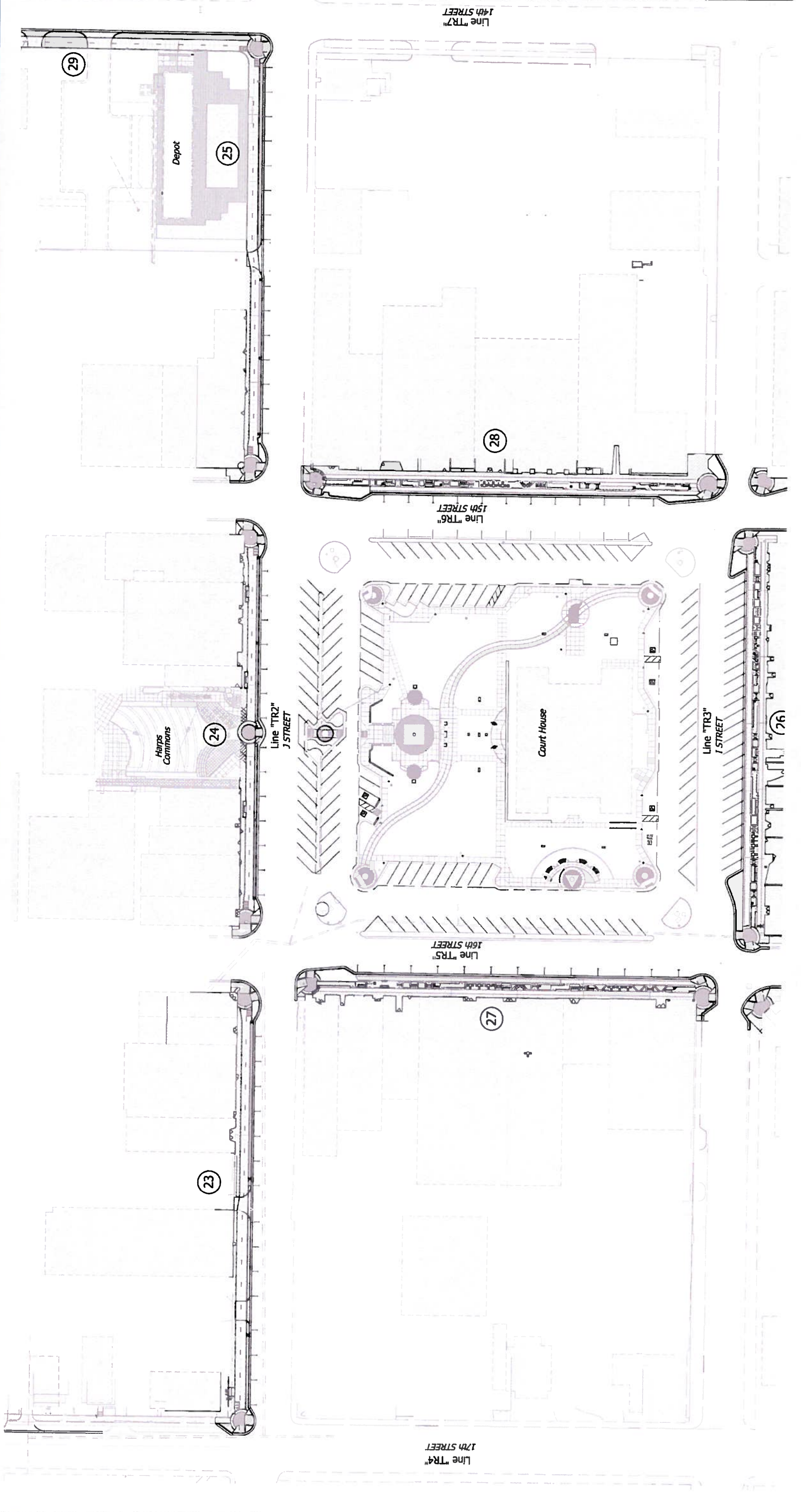
**City of Bedford**—*Marla Jones*, Business and Community Dev., 812-279-6555, 812-277-6053 cell, [mjones@bedford.in.us](mailto:mjones@bedford.in.us)

**Lochmueller Group**—*Marc Weaver*, Project Engineer/Project Supervisor, 812-675-8899, [mweaver@lochgroup.com](mailto:mweaver@lochgroup.com)  
*Brian Fleck*, Project Manager, 812-470-3253, [bfleck@lochgroup.com](mailto:bfleck@lochgroup.com)

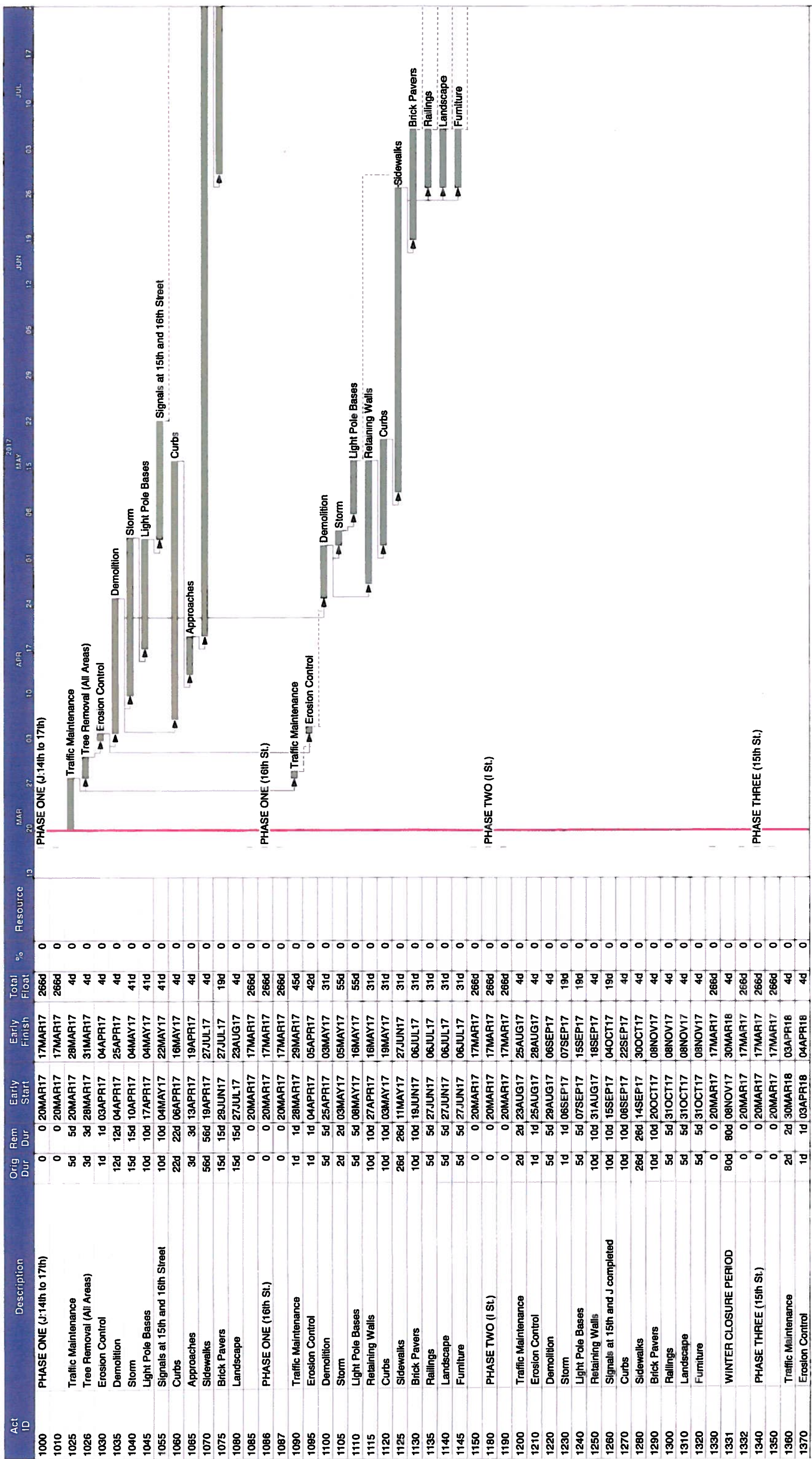
**Weddle Brothers Construction**—*Amy Smith*, Project Foreman, 812-340-2919, [asmith@weddlebros.com](mailto:asmith@weddlebros.com)  
*Scott Lentz*, Project Manager, 812-325-5095, [slentz@weddlebros.com](mailto:slentz@weddlebros.com)











Act ID	Description	Orig Dur	Rem Dur	Early Start	Early Finish	Total Float	% Resource
1000	PHASE ONE (J:14th to 17th)	0	0	20MAR17	17MAR17	266d	0
1010	Traffic Maintenance	0	0	20MAR17	17MAR17	266d	0
1025	Tree Removal (All Areas)	5d	5d	20MAR17	28MAR17	4d	0
1026	Erosion Control	3d	3d	28MAR17	31MAR17	4d	0
1030	Demolition	1d	1d	03APR17	04APR17	4d	0
1035	Storm	12d	12d	04APR17	25APR17	4d	0
1040	Light Pole Bases	15d	15d	10APR17	04MAY17	41d	0
1045	Signals at 15th and 16th Street	10d	10d	17APR17	04MAY17	41d	0
1060	Curbs	22d	22d	06APR17	16MAY17	4d	0
1065	Approaches	3d	3d	13APR17	19APR17	4d	0
1070	Sidewalks	56d	56d	19APR17	27JUL17	4d	0
1075	Brick Pavers	15d	15d	29JUN17	27JUL17	19d	0
1080	Landscape	15d	15d	27JUL17	23AUG17	4d	0
1085	PHASE ONE (16th St.)	0	0	20MAR17	17MAR17	266d	0
1086	Traffic Maintenance	0	0	20MAR17	17MAR17	266d	0
1087	Erosion Control	1d	1d	28MAR17	29MAR17	45d	0
1090	Demolition	1d	1d	04APR17	05APR17	42d	0
1100	Storm	5d	5d	25APR17	03MAY17	31d	0
1105	Light Pole Bases	2d	2d	03MAY17	05MAY17	55d	0
1110	Retaining Walls	5d	5d	08MAY17	16MAY17	55d	0
1115	Curbs	10d	10d	27APR17	16MAY17	31d	0
1120	Sidewalks	26d	26d	11MAY17	19MAY17	31d	0
1130	Brick Pavers	10d	10d	19JUN17	06JUL17	31d	0
1135	Railings	5d	5d	27JUN17	06JUL17	31d	0
1140	Landscape	5d	5d	27JUN17	06JUL17	31d	0
1145	Furniture	5d	5d	27JUN17	06JUL17	31d	0
1150	PHASE TWO (I St.)	0	0	20MAR17	17MAR17	266d	0
1180	Traffic Maintenance	0	0	20MAR17	17MAR17	266d	0
1190	Erosion Control	0	0	20MAR17	17MAR17	266d	0
1200	Demolition	2d	2d	23AUG17	25AUG17	4d	0
1210	Storm	1d	1d	25AUG17	28AUG17	4d	0
1220	Light Pole Bases	5d	5d	28AUG17	06SEP17	4d	0
1230	Retaining Walls	1d	1d	06SEP17	07SEP17	19d	0
1240	Curbs	5d	5d	07SEP17	15SEP17	19d	0
1250	Signals at 15th and J completed	10d	10d	31AUG17	18SEP17	4d	0
1260	Sidewalks	10d	10d	15SEP17	04OCT17	19d	0
1270	Brick Pavers	10d	10d	06SEP17	22SEP17	4d	0
1280	Railings	26d	26d	14SEP17	30OCT17	4d	0
1290	Landscape	10d	10d	20OCT17	08NOV17	4d	0
1300	Furniture	5d	5d	31OCT17	08NOV17	4d	0
1310	WINTER CLOSURE PERIOD	5d	5d	31OCT17	08NOV17	4d	0
1320	PHASE THREE (15th St.)	5d	5d	31OCT17	08NOV17	4d	0
1330	Traffic Maintenance	0	0	20MAR17	17MAR17	266d	0
1331	Erosion Control	80d	80d	08NOV17	30MAR18	4d	0
1332	PHASE THREE (15th St.)	0	0	20MAR17	17MAR17	266d	0
1340	Traffic Maintenance	0	0	20MAR17	17MAR17	266d	0
1350	Erosion Control	0	0	20MAR17	17MAR17	266d	0
1360	Traffic Maintenance	2d	2d	30MAR18	03APR18	4d	0
1370	Erosion Control	1d	1d	03APR18	04APR18	4d	0

- █ Early bar
- █ Progress bar
- █ Critical bar
- █ Summary bar
- ◆ Start milestone point
- ◻ Finish milestone point

**WEDDLE BROS. HIGHWAY GROUP, LLC**  
**BEDFORD STREETSCAPE**







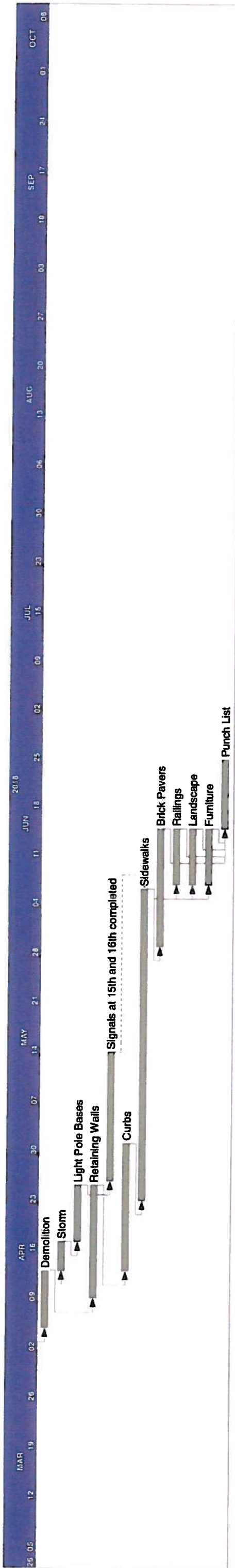
WINTER CLOSURE PERIOD

Traffic Maintenance  
Erosion Control

Start date 20MAR17  
 Finish date 25JUN18  
 Data date 20MAR17  
 Run date 27FEB17  
 Page number 1C  
 © Primavera Systems, Inc.

Early bar  
 Progress bar  
 Critical bar  
 Summary bar  
 Start milestone point  
 Finish milestone point

**WEDDLE BROS. HIGHWAY GROUP, LLC  
 BEDFORD STREETSCAPE**



Start date 20MAR17  
 Finish date 25JUN18  
 Data date 20MAR17  
 Run date 27FEB17  
 Page number 2C  
 © Primavera Systems, Inc.

**WEDDLE BROS. HIGHWAY GROUP, LLC**  
**BEDFORD STREETSCAPE**

Legend:  
 ■ Early bar  
 ■ Progress bar  
 ■ Critical bar  
 ■ Summary bar  
 ◆ Start milestone point  
 ◆ Finish milestone point